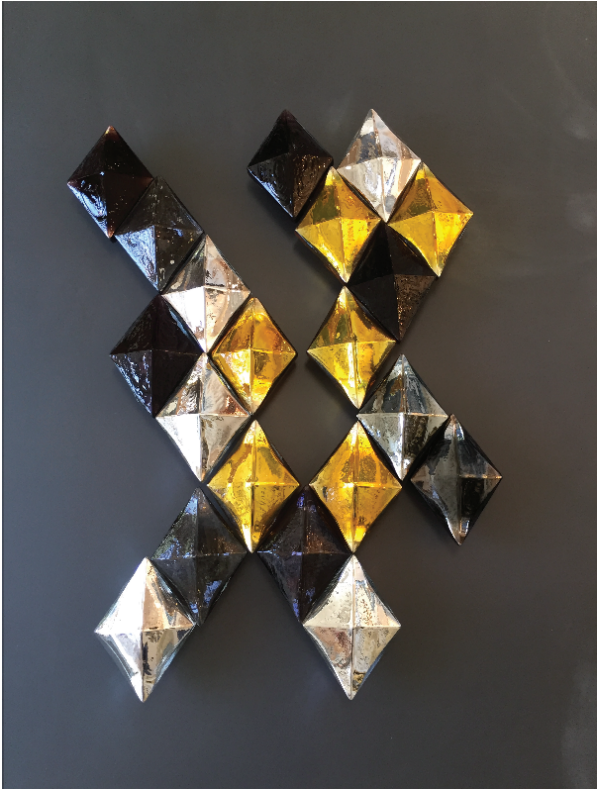


DIAMONDS



MOUNTING INSTRUCTIONS FOR SECURITY STANDOFF SYSTEM

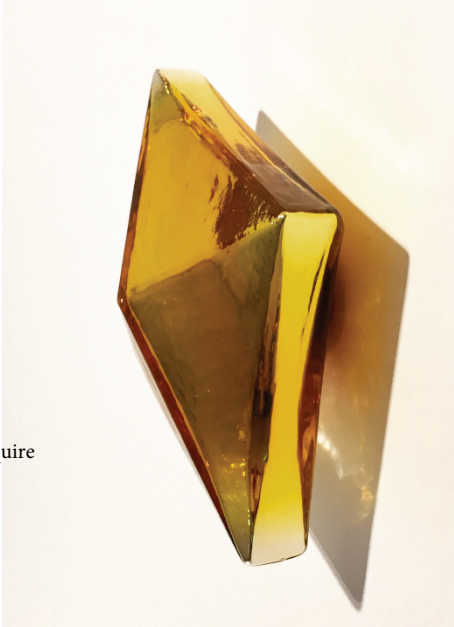


Hardware

Toggle anchor (A)



*may or may not require a washer

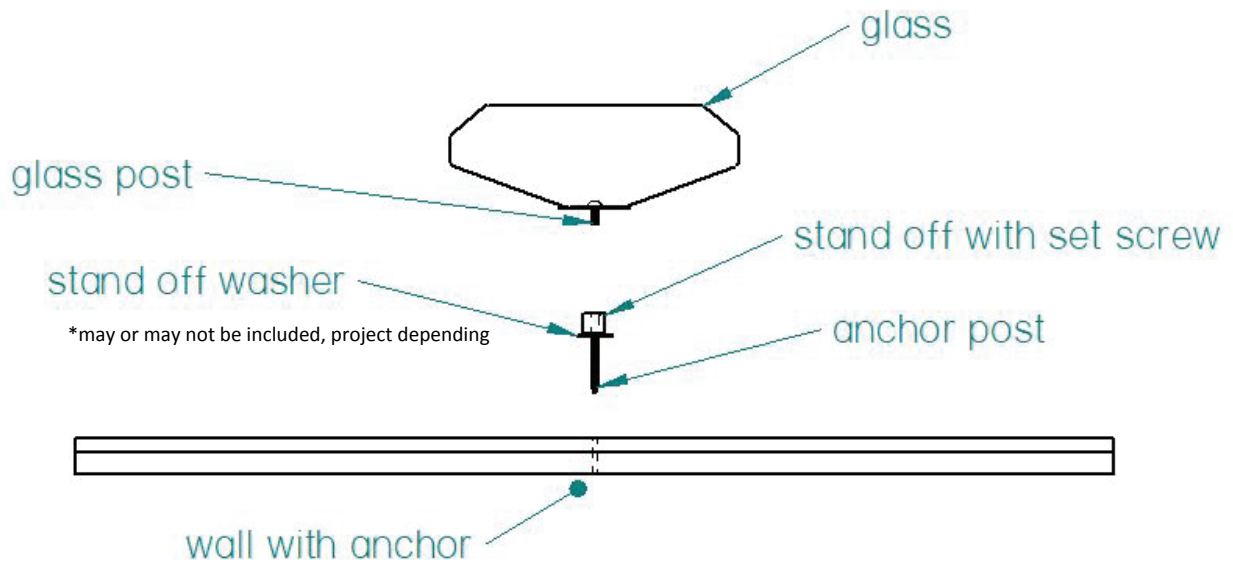


Tools

- Electronic stud finder
- Drill
- .5: drill bit
- Side cutters
- Paper templates

Installation Note

This product must be installed in accordance with the applicable installation code by a person familiar with construction and operation of the product and the hazards involve.



1. Lay our provided paper templates on wall as per desired composition
2. Use electronic stud finder to locate wall studs that might interfere with toggle anchor (A) placement and adjust templates accordingly to miss the studs
3. Mark the wall where toggle anchor (A) is to be placed as indicated by paper template
4. Drill hole through wall using .5" Drill bit
5. Install toggle anchor (A) into wall and remove toggle tail with side cutters as per toggle anchor instructions (provided).
6. Thread the stud in the back of the stand-off assembly (B) through the wall plate (D) into the toggle anchor (A) until it seats snugly against the wall with no "play"
7. Thread the stand-off cap assembly (C) through the glass (E) making sure that the plastic cap washers are seated properly between the glass and the stand-off cap assembly (C), and the glass and the stand-off post assembly (B). There should not be any metal directly contacting the glass.
8. The glass (E) can be gently rotated on the stand-off to achieve the proper composition, and orientation
9. Repeat with the rest of the pieces. *a small amount of threadlock or epoxy can be used for added security.

ON CLEANING

Regular cleaning is essential to prevent dust from building up on the glasswork.

For general everyday cleaning, use a soft, antistatic dust brush or similar. For cleaning stubborn layers of dust, use a gentle solvent free cleanser with paper towels or a microfibre cloth. Wipe glass gently.

FOR ETCHED/FROSTED GLASS FINISHES

The piece has been sealed with a special coating for etched glass surfaces. Wipe off any fingerprints of dust with a damp, lint free cloth. Do not immerse in water.

FOR MIRRORED FINISHES

Use a damp, lint free cloth to remove any dust or fingerprints from the outside of the piece. Glass cleaner can be used as well. To clean the inside; DRY dust or air blow ONLY. Any type of chemical or liquid could react with the mirror causing it to oxidize. To clean the inside of the piece, dry dust or use a damp paper towel.

WARRANTY

SOFFI warrants its products to be free of defects in workmanship under normal use and service for a period of one year from the date of purchase. SOFFI reserves the right to inspect damaged product before having any obligation under this limited warranty. All costs of shipping for inspection are the sole responsibility of the purchaser. SOFFI, at its option, shall repair or replace the defective unit covered by this warranty. SOFFI is not responsible for damages caused by improper installation or maintenance. Modifications to the fixture and glass not performed by SOFFI voids the warranty. Our warranty extends to products purchased only by the original purchaser.

GENERAL NOTE

The glass and its hardware should not be exposed to water or wind or be allowed to oscillate continuously in any circumstance. Avoid placing fixtures close to HVAC vents or walls without sufficient bracing to the absorb the shock of opening and closing doors.

REPLACEMENTS

Glass replacement parts can be obtained by contacting the studio.

SOFFI STUDIO

Arrangement and Toggle installation instructions

